

  
LIGHTHOUSE  
CALA SANTANYÍ



THE  
**RE/MAX**  
COLLECTION  
*Exclusive*

*B&N Realty*  
LIVE YOUR DREAM

**TERRAZA**  
BALEAR

PART OF  
GUNNI & TRENTINO

**PORSCHE**  
CENTRO PORSCHE BALEARES



# LIGHTHOUSE

CALA SANTANYÍ

Lighthouse is a newly built villa with a modern Mediterranean design, located in one of Mallorca's most exclusive areas.

Thanks to its privileged position, almost every room enjoys stunning views of Cala Santanyí Beach, which is just a short walk away. The villa's design perfectly combines spaciousness, privacy, and a seamless connection between indoor and outdoor living, creating a comfortable and elegant home that fully embraces the Mediterranean lifestyle.

- Open views of Cala Santanyí Beach
- Just steps from the beach
- Modern Mediterranean design
- High level of privacy in an exclusive setting
- Smooth flow between indoor and outdoor spaces

# Living & Dining Area

The heart of the villa is designed as an open-plan living space, bringing the lounge and dining areas together in one bright and spacious setting. Floor-to-ceiling Technal windows flood the interior with natural light while offering beautiful views of Cala Santanyi.

The seamless connection to the outdoor terraces enhances the sense of space and creates a smooth transition between indoor and outdoor living, perfectly suited to the Mediterranean lifestyle.

Open-plan layout with dual-aspect orientation

Floor-to-ceiling Technal windows

Underfloor heating and discreet climate control

Direct access to the main terrace

Front-facing views of the Mediterranean Sea





# Kitchen

The kitchen at Lighthouse has been designed as a premium living space, combining functionality with elegant design. Its spacious layout features a large central island and is equipped with top-of-the-line appliances from renowned brands such as Gaggenau, Miele, and Sub-Zero, ensuring exceptional quality and performance throughout.

Natural stone surfaces and warm wood finishes create a timeless and inviting atmosphere. Large windows fill the space with natural light and establish a seamless connection to the outdoor areas, perfectly reflecting the essence of Mediterranean living.

# Architectural Layout

Every level of Lighthouse has been carefully designed to maximize natural light, showcase the views of Cala Santanyí, and create a seamless flow between indoor and outdoor living spaces.



## Rooftop Terrace

A panoramic lounge area offering privileged views over Cala Santanyí and the surrounding Mediterranean landscape.



## Suites & Bedrooms

Private bedrooms with spacious terraces and uninterrupted views of Cala Santanyí, designed to provide comfort, privacy, and a strong connection to the outdoors.



## Living, Dining Area & Kitchen

An open-plan living space featuring a central kitchen island, generous entertaining areas, and direct access to the terraces and pool, all framed by spectacular sea views.



## Garage

A spacious private garage with convenient access to the villa and integrated technical and storage areas.





### Infinity Pool

Seamlessly blends into the horizon, offering stunning sea views and a direct connection to the beach.



### Terraces & Sun Deck

Spacious outdoor areas designed for relaxation, sunbathing, and enjoying the Mediterranean lifestyle.



### Outdoor Kitchen

A dedicated barbecue and entertaining area, perfect for dining and gathering under the open sky.



### Mediterranean Garden

Lush landscaping featuring native Mediterranean plants, carefully selected to create a serene and natural environment.



## Outdoor Living Spaces



# Technical Specifications

- Custom-made exterior carpentry
- Large-format porcelain flooring and oak wood flooring

## Materials & Finishes

- Natural stone cladding
- Bespoke wood paneling
- Premium designer fixtures and fittings
- Integrated high-end appliances

<b>Orientation</b>	Southeast
<b>Location</b>	Cala Santanyi, Mallorca
<b>Plot Size</b>	1.780 m <sup>2</sup>
<b>Built Area</b>	405 m <sup>2</sup>
<b>Basement</b>	289 m <sup>2</sup>
<b>Bedrooms</b>	5
<b>Bathrooms</b>	6
<b>Pool</b>	Infinity Pool
<b>Garage</b>	Yes
<b>Elevator</b>	Yes

<b>Air Conditioning</b>	Yes
<b>Underfloor Heating</b>	Yes
<b>Home Automation System</b>	Yes
<b>Security</b>	CCTV + Alarm System
<b>Home Cinema</b>	Yes
<b>Wine Cellar</b>	Yes
<b>Outdoor Kitchen</b>	Yes
<b>Solarium</b>	Yes



# Cala Santanyí

Cala Santanyí is one of the most beautiful destinations in the southeast of Mallorca – a place where tranquility, nature, and the Mediterranean lifestyle come together in perfect harmony. Crystal-clear turquoise waters, soft sandy beaches, and a landscape of pine trees and rugged cliffs create a unique setting for experiencing the island at its most authentic.

Beyond its natural beauty, Cala Santanyí is known for its relaxed and exclusive atmosphere, far from the crowds of mass tourism. Its privileged location offers privacy and serenity without sacrificing convenience, with the charming town of Santanyí just a few minutes away.

Renowned for its traditional stone architecture, picturesque streets, and popular weekly market, Santanyí combines authentic Mallorcan character with a sophisticated Mediterranean charm. The surrounding area is also home to spectacular natural landmarks, including the Mondragó Natural Park and the iconic Cala Llobards, making this one of Mallorca’s most sought-after and unspoiled regions.



Just minutes away from some of Mallorca’s most stunning coves, including Cala Llobards, Cala des Moro, and Mondragó.



15–20 minutes from Vall d’Or Golf Course and the Cala d’Or Marina.



Close to the idyllic beaches of Cala Figuera and Cala Mondragó.



Approximately 45–50 minutes from Palma de Mallorca International Airport.



# TERRAZA

B A L E A R

PART OF  
GUNNI & TRENTINO

The interior furnishing of this project is entrusted to Terraza Balear (part of the Gunni & Trentino Group), a company with extensive experience in Mallorca and a recognized specialist in high-end residential interiors.

Terraza Balear manages the complete selection, delivery, and installation of all furnishings, ensuring that each residence is handed over fully equipped and perfectly aligned with the architectural vision of the project.

Owners have the flexibility to retain the design and aesthetic concept presented in the renderings or customize the interior furnishings according to their personal preferences, always supported by the expertise and guidance of the Terraza Balear team.

This approach allows every home to be tailored to its owner's lifestyle while maintaining the exceptional standards of design, quality, and aesthetic harmony that define the project.



The SC  
THE EXCLUSIVE COLLECTION

# PORSCHE

This project is supported by Porsche as an official collaboration partner, reinforcing its exclusive identity and distinctive character.

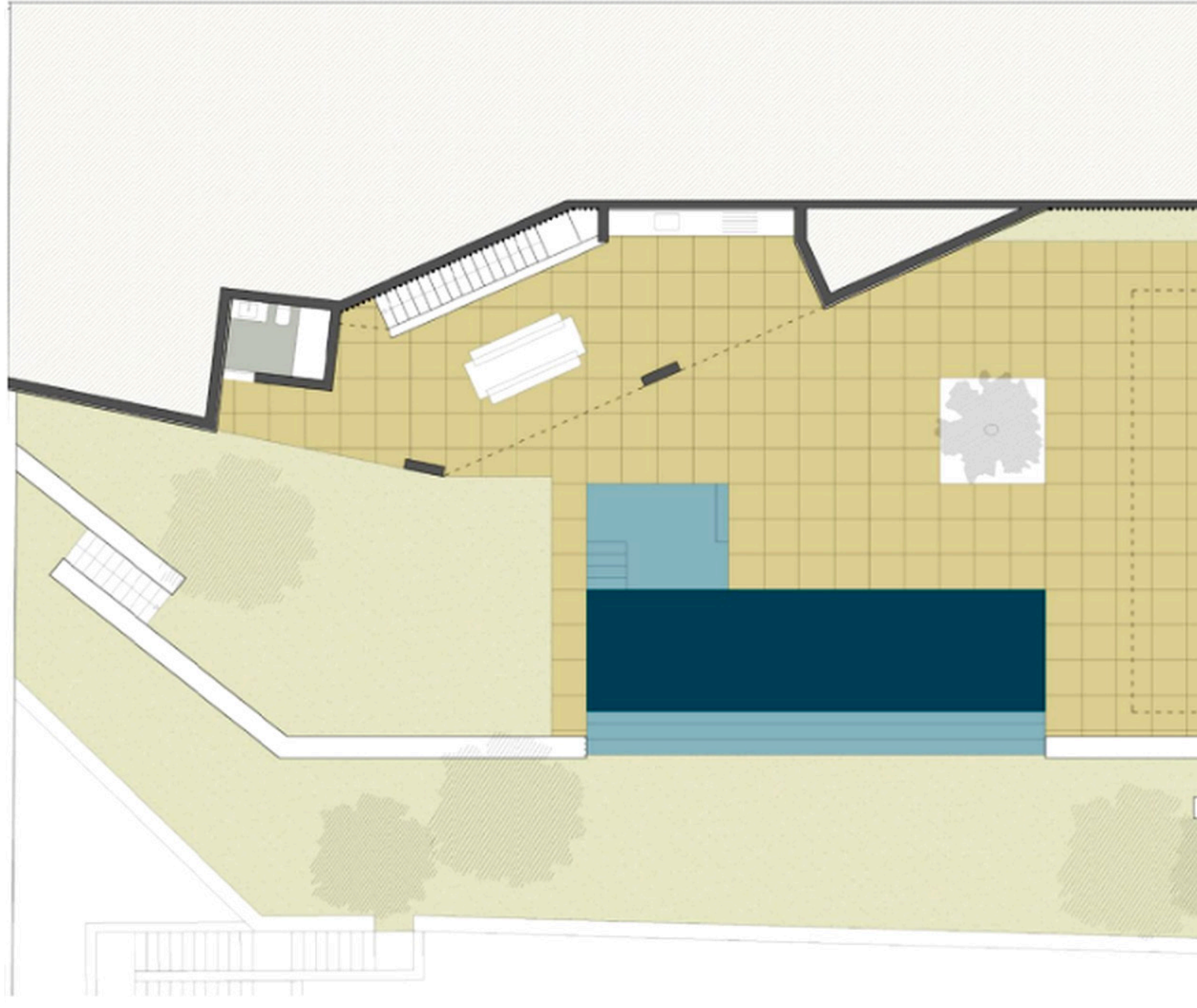
As part of this unique partnership, each property is delivered together with a premium Porsche vehicle, already included in the purchase price — a concept that elevates the ownership experience far beyond architecture alone.

Owners can fully embrace the exceptional lifestyle offered by this remarkable setting, exploring the scenic coastal roads, hidden coves, and breathtaking landscapes of Mallorca's southeast coast, where the sea, nature, and design come together in perfect harmony.

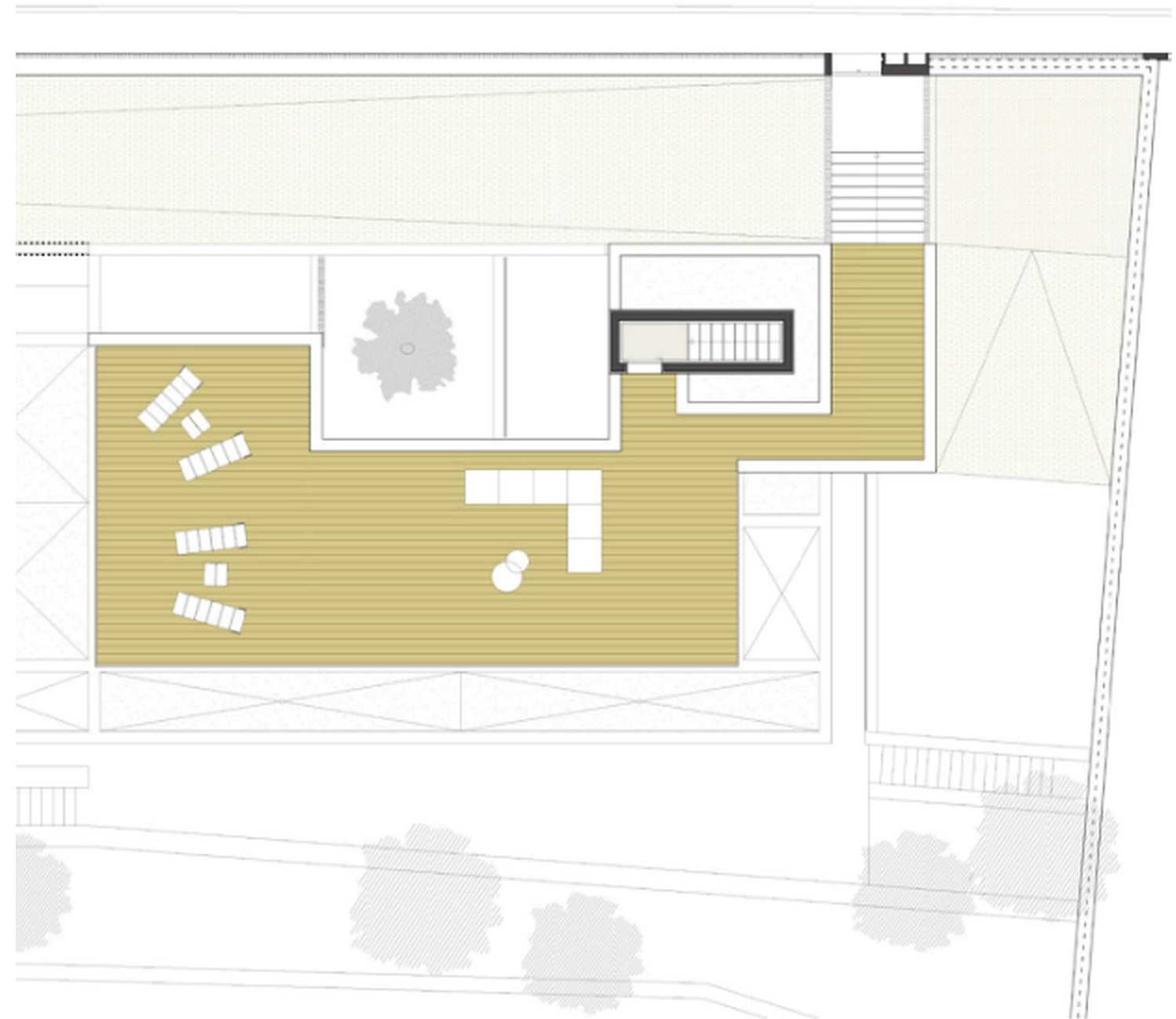
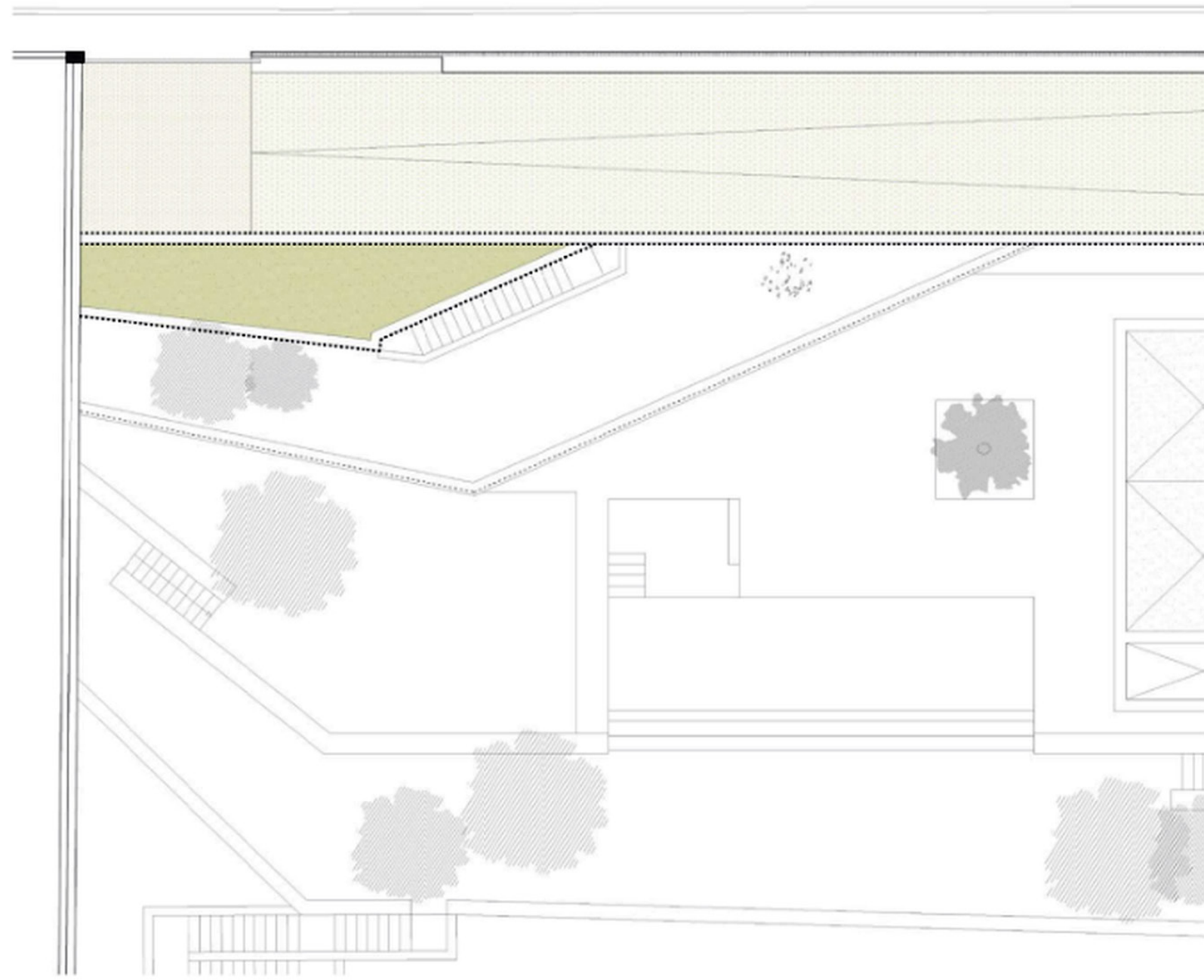
The combination of outstanding architecture, sophisticated design, and one of the world's most iconic automotive brands creates a truly unique value proposition, setting this development apart within Mallorca's luxury real estate market.

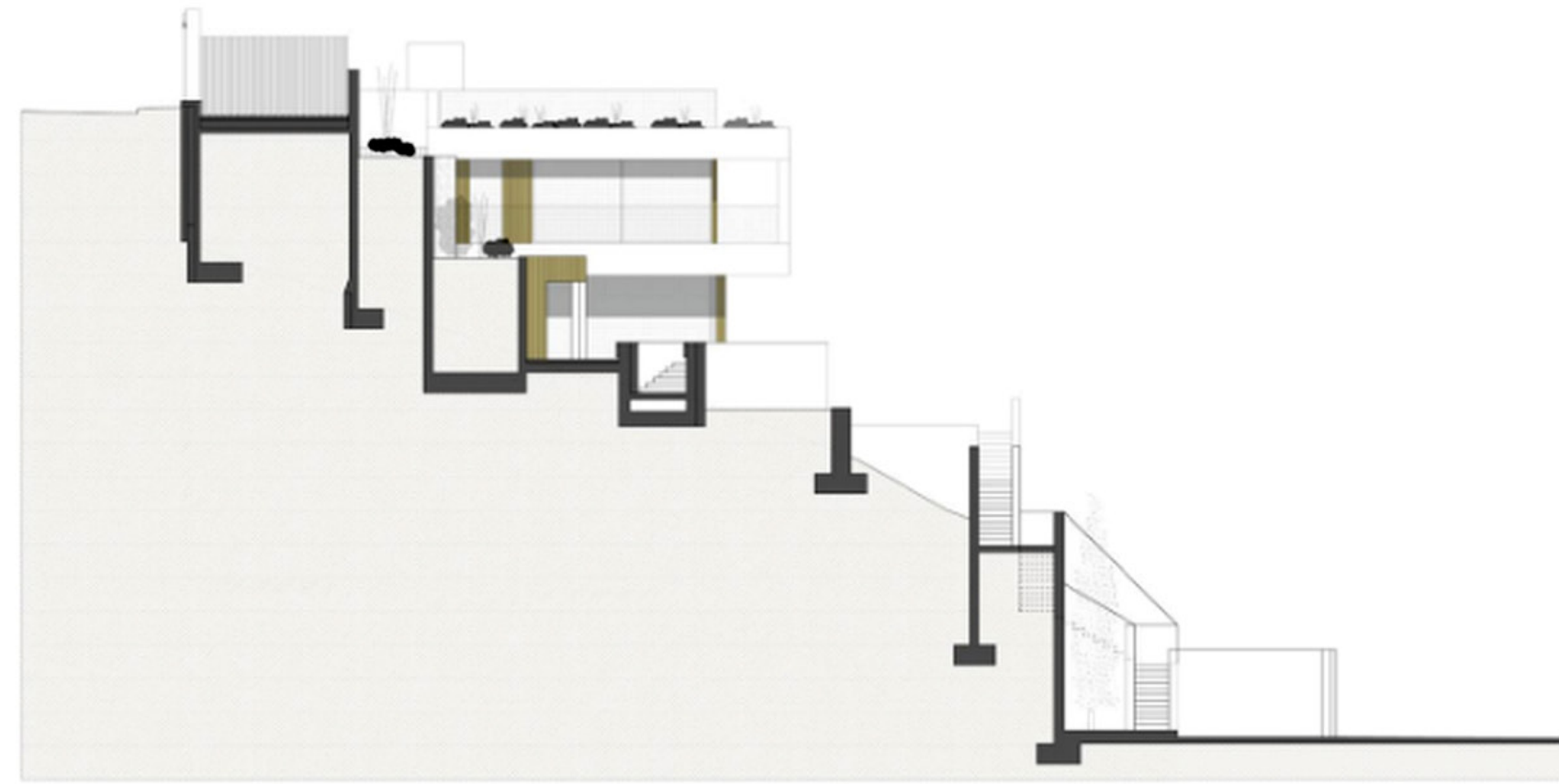
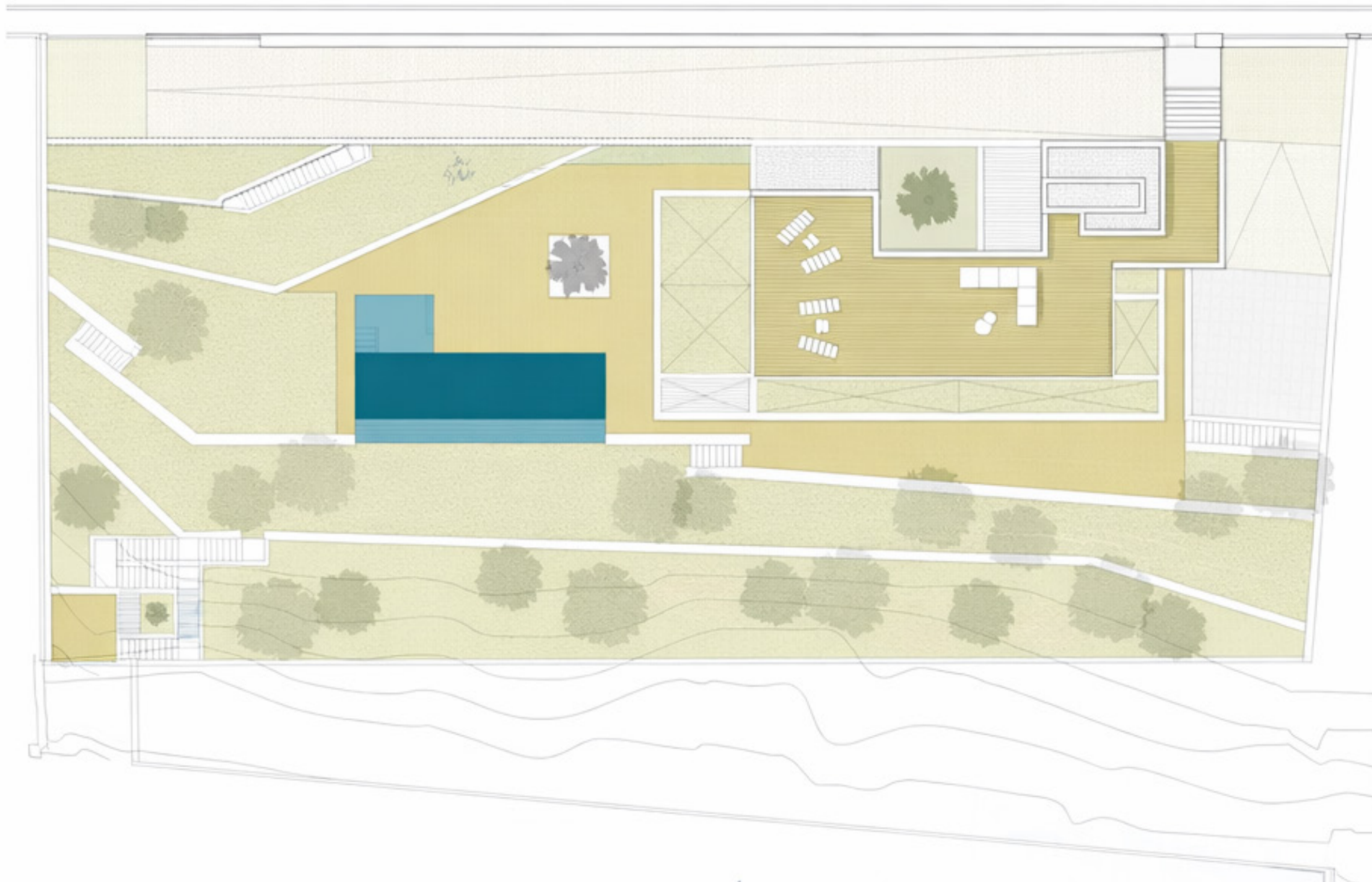
**PORSCHE**  
CENTRO PORSCHE BALEARES











SUPERFICIES / SURFACES

SOLAR / PLOT <b>1,780 m<sup>2</sup></b>	VIVIENDA / HOUSING <b>405 m<sup>2</sup></b>	SÓTANO / CELLAR <b>289 m<sup>2</sup></b>	PISCINA / POOL <b>50 m<sup>2</sup></b>
PORCHE TERRAZA P1 / PORCH TERRACE P1 <b>46 m<sup>2</sup></b>	PORCHES PB / GF PORCH <i>(Incluyen porche terraza P1)</i> <i>(including oddch terrace P1)</i> <b>141 m<sup>2</sup></b>	SOLARIUM CUBIERTA / COVERED SOLARIUM <b>130 m<sup>2</sup></b>	TERRAZAS PB / GF TERRACE <b>365 m<sup>2</sup></b>
PORCHES PB / PORCH TERRACE P1 <b>141 m<sup>2</sup></b>		SOLARIUM CUBIERTA / COVERED SOLARIUM <b>130 m<sup>2</sup></b>	
TERRAZAS PB <b>141 m<sup>2</sup></b>		TERRAZAS PB / GF TERRACE <b>365 m<sup>2</sup></b>	

THE  
**RE/MAX**  
COLLECTION  
*Exclusive*

Batlle Andreu Burguera Mut 3  
07640 Ses Salines, Mallorca  
+34 660 990 707  
dani.gonzalez@remax.es

Disclaimer & Privacy Notice

The content of this presentation, including all text, images, plans, logos, and any other materials, is the exclusive property of RE/MAX Exclusive Collection and is protected by applicable copyright and intellectual property laws.

Any reproduction, distribution, publication, or transmission of this material, in whole or in part and in any format or medium, is strictly prohibited without prior written consent.

The information contained in this presentation, including project details, plans, and descriptions, is provided for informational purposes only and does not constitute a contractual offer. The owner and/or developer reserves the right to make modifications without prior notice.

In accordance with the General Data Protection Regulation (GDPR – Regulation (EU) 2016/679) and applicable Spanish data protection legislation, any personal data provided in connection with this presentation will be treated confidentially and used solely for the purpose of managing inquiries and business communications.

Data subjects may exercise their rights of access, rectification, erasure, restriction, objection, and any other rights granted under applicable law by contacting:

juan.bonet@remax.es

The information contained in this document is confidential and intended solely for the designated recipient for business and informational purposes. Any unauthorized use, disclosure, distribution, or reproduction is strictly prohibited.